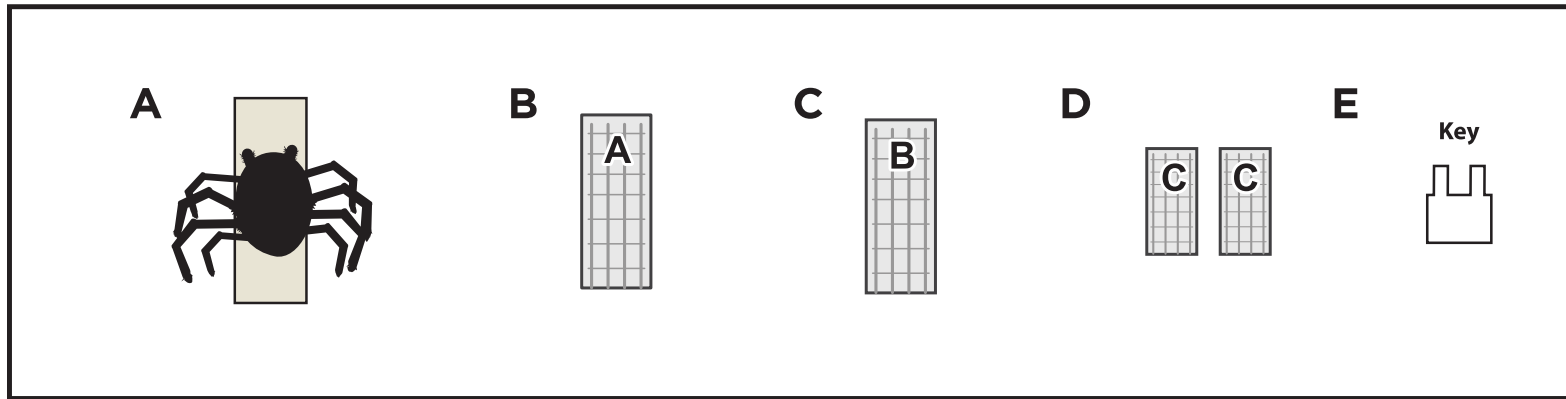


JUMPING SPIDER™

INSTALLATION AND OPERATING INSTRUCTIONS

KEEP ALL PLASTIC AND WIRE PARTS AWAY FROM CHILDREN

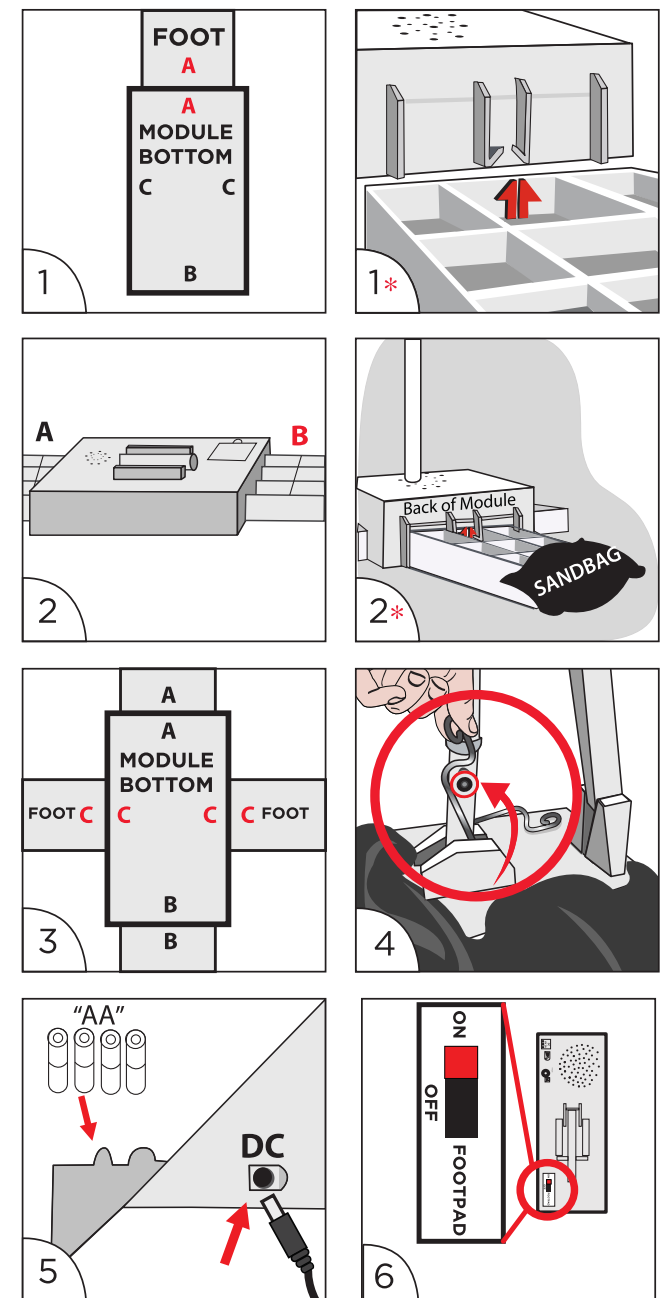
WARNING: DO NOT TURN ON THE PROP UNTIL FULLY ASSEMBLED: STAY CLEAR OF THE PROP WHILE OPERATING



Parts:

- A: MODULE WITH SPIDER**
- B: FRONT FOOT**
- C: BACK FOOT**
- D: SIDE FEET**
- E: FOOT REMOVAL "KEY"**

1. Insert FRONT FOOT into bottom of MODULE WITH SPIDER until it locks into place. (Match A to A)
* Note: Press to make sure each FOOT is flush with rectangular base. To remove FOOT, insert FOOT REMOVAL "KEY" (included) into holes on bottom to release locks, twist and pull.
2. Insert BACK FOOT into bottom of MODULE WITH SPIDER until it locks into place. (Match B to B)
Note: Place weight on FOOT to increase stability. (*See illustration 2)
3. Insert SIDE FEET into bottom of MODULE WITH SPIDER until they lock into place. (Match C to C)
4. ***IMPORTANT** Lift SPIDER wrapped in fabric until poles are vertical. Attach the 2 metal springs by pulling each spring backward and securing them to the posts located on either side of the pole on MODULE WITH SPIDER. Pull black fabric bag up and over the springs.
5. Insert 4 AA alkaline batteries into the battery compartment located on the top of the MODULE or connect the DC adapter. (Sold separately)
Note: Make sure there are no obstructions to hinder the Spider's movement.
6. Remove spring instruction label located on the corner of the MODULE and turn switch on top of MODULE to ON to operate in sound and motion activation mode. Make a loud sound (clap) or move in front of the item to activate. Leave switch in OFF position when not in use.
7. Release fabric around spider and attach hook and loop fasteners under fabric to the opposite hook and loop fasteners located on all four feet.
8. Spread out fabric and pose legs as desired.

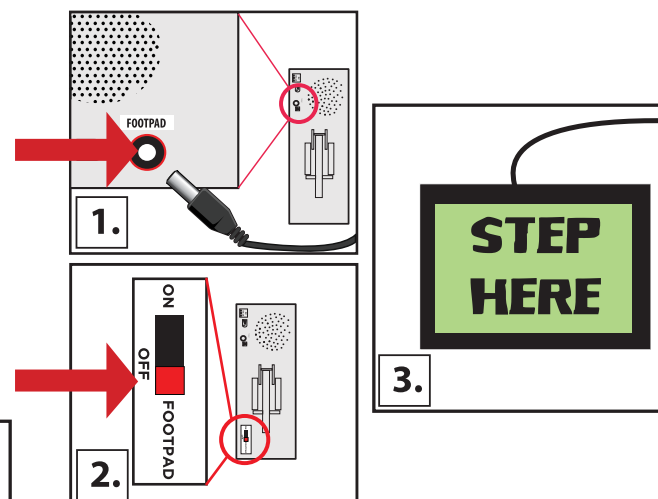


OPTIONAL FOOTPAD SET UP

FOOTPAD IS NOT INCLUDED. MUST BE PURCHASED SEPARATELY.
Follow steps # 1 through 6 on initial installation first.

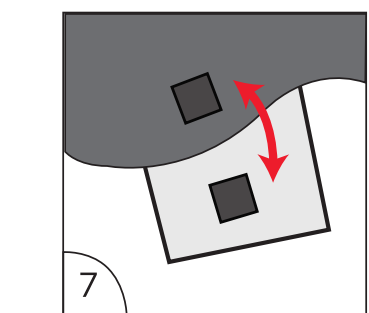
1. Connect the cable from the optional footpad to the jack labeled FOOTPAD located on the BASE.
2. Place the switch on the BASE into the 'FOOTPAD' position to enable FOOTPAD activation.
3. Step on FOOTPAD to activate the prop.
(Go to instruction #7 to continue setup)

* Footpads, adapters and all other accessories are sold separately and can be purchased at www.tekkyaccessories.com



Trouble Shooting Steps

- If you hear a constant clicking sound and the item does not function properly, it means there is an obstruction preventing the item from operating (rock, bush, incline, etc.). Remove the obstruction and the item should function normally.
- Make sure the springs are attached. See illustration 4.
- If item is stuck in up or down position: 1. Turn the item OFF. 2. Detach the springs from the module. 3. Turn the item ON and activate for 1 full cycle. 5. Turn the item OFF, reattach the springs and turn the item back ON.
- Motion Sensor - make sure that the motion sensor on SPIDER'S head is facing forward and there are no obstructions blocking sensor tube. To test the motion sensor, shine a flashlight into the tube.



SMART PHONE SCAN SETUP VIDEO



Battery Diagram

BATTERY INSTRUCTIONS AND CAUTIONS
Battery installation and removal should be performed by an adult. Remove batteries when not in use. Use only batteries recommended in the instructions. Do not mix new and used batteries. Do not mix alkaline, carbon-zinc, nickel-cadmium, rechargeable or different types of batteries. Be mindful to insert batteries with the correct polarity (+/-) as indicated. Remove all exhausted batteries. Rechargeable batteries are only to be charged under adult supervision. Rechargeable batteries are to be removed from the item before being charged. Non-rechargeable batteries are not to be recharged. The supply terminals are not to be short-circuited. Always dispose of exhausted batteries properly. Do NOT dispose of batteries in fire, they may leak or explode.

Warning! This item is not a toy. For decoration only. Small parts, choking hazard. This product is intended for use by persons 15 years of age and older. Not intended for use by children ages 14 years and younger.

WARNING
DO NOT TURN ITEM ON UNTIL YOU HAVE COMPLETELY FINISHED ASSEMBLY.
STAY CLEAR OF ITEM WHILE OPERATING.
DO NOT PLACE ITEM ON UNEVEN GROUND.
DO NOT PLACE WEIGHT ON ITEM WHILE IN OPERATION
**** FOR INDOOR USE ONLY****



DO NOT RETURN THIS ITEM TO THE STORE!
If experiencing technical difficulties, please go to www.tekkydesign.com for assistance.



visit us at tekkydesign.com
Requires optional 6V 2A ADAPTER or 4 AA batteries (not included)

ALL NEW MATERIALS:
METAL, PLASTIC, POLYESTER FIBERS
Surface washable only.

JUMPING SPIDER™ is a trademark of Tekky. Patent RE46,087 Copyright © 2019 Tekky. All Rights Reserved. MADE IN CHINA

